



HIGH SCHOOL PROFILE 2025-2026

6 RAMKHAMHAENG 184, MINBURI
BANGKOK 10510, THAILAND
TEL: 02-791-8900 • FAX: 02-791-8901
www.rism.ac.th • hscounseling@rism.ac.th



MISSION

RIS Ruamrudee International School is a Catholic school that provides an interfaith, inclusive, and academically rigorous education for students to be balanced, successful, and compassionate individuals.



ACCREDITATION

RIS is accredited by the US-based Western Association of Schools and Colleges (WASC).

CEED Code 695300 • IB Code 001044 • UCAS Code 45065

RIS is a proud member of



RIS integrates its values through the **Portrait of a Phoenix**—uniting **head, hands, and heart** to ground learners in knowledge, guide skillful action, and nurture compassion.

HEAD HANDS HEART

These **six learner profiles**, each grounded in **head, hands, and heart**, reflect the qualities RIS strives to cultivate in every student.



A CURIOUS SCHOLAR



A PRINCIPLED LEARNER



A GLOBALLY-MINDED LEADER



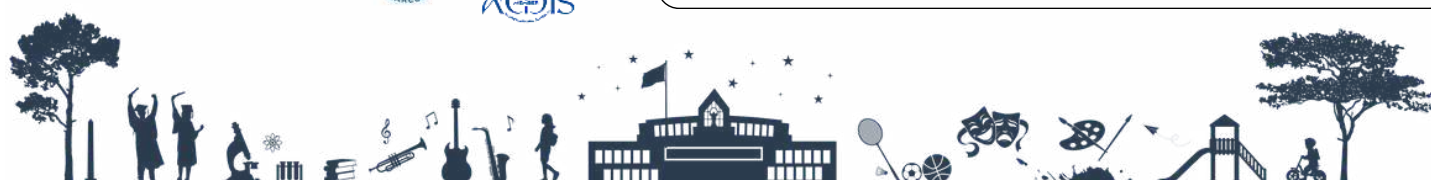
A VERSATILE COMMUNICATOR



AN INNOVATIVE THINKER



A REFLECTIVE, BALANCED INDIVIDUAL



OVERVIEW

- Established in 1957
- Independent, non-profit Catholic-based school
- Pre-K 2 – grade 12 day school with a 60-student boarding facility (RIS Residence)
- American college preparatory curriculum
- Offers both IB Diploma and AP Courses, one of only a few schools in Asia to do so
- All classes, with the exception of modern language classes, are taught in English.

SCHOOL & COMMUNITY

82 graduating seniors

22 IB courses

358 high school enrollment

19 AP courses

1,011 total Pre-K 2 to Grade 12 enrollment

39 entries to medical & dental schools

The majority of RIS students are fluent in both English and Thai and often in a third language as well. RIS students benefit from:

a 20-day rotating and cascading schedule

1:1 time with teachers during daily Flex Block + Extended Learning Block

several modern language choices

innovative electives

vibrant performing and visual arts program

a large selection of sports (member of SEASAC, a regional association)

English Language Development and Learning Support services

RIS students are involved in extracurricular programs, such as:



RIS also offers many student-led and service-learning oriented clubs, such as:



HS UNIVERSITY COUNSELING TEAM

HS COUNSELORS

Lindsey Kamal
lindseyk@rism.ac.th

Deneene Ricketts
deneener@rism.ac.th

Samantha Huner
samanthah@rism.ac.th

THAI COLLEGE COUNSELOR

Dr. Tawan Waengsothorn
tawanw@rism.ac.th

HS COUNSELING ASSISTANT

Nathsinee Wangveranusorn
hscounseling@rism.ac.th

HS ADMINISTRATION

HEAD OF SCHOOL Dr. James O'Malley

HIGH SCHOOL PRINCIPAL Dr. Nathan Meisner

HIGH SCHOOL ASSISTANT PRINCIPAL Kate Culbert

IB DIPLOMA COORDINATOR Nicole Sabet

AP COORDINATOR Pavla Poch



Class of 2026

GRADUATION REQUIREMENTS

To qualify for a diploma, students must earn 36 credits, complete their final year of high school at RIS, and fulfill the following minimum requirements:

SUBJECTS & REQUIRED CREDITS

- English (5.0)
- Mathematics (4.0)
- Social Sciences (3.0)
- Science (3.0)
- Religion or Values (2.0)
- Performing and/or Visual Arts (2.0)
- Physical Education (2.0)
- Modern Language or Thai* (2.0)
- Health (1.0)
- Electives (12.0)

*All Thai nationals at RIS must take a Thai language class every semester.



RIS GRADING SCALE & GPA WEIGHT

Only classes taken at RIS are included in a student's GPA. RIS does not rank.

	Regular Grade Point	Weighted Grade Point*	Weighted Grade Point**
A	4.00	4.25	4.50
A-	3.67	3.92	4.17
B+	3.33	3.58	3.83
B	3.00	3.25	3.50
B-	2.67	2.92	3.17
C+	2.33	2.58	2.83
C	2.00	2.25	2.50
C-	1.67	1.92	2.17
D+	1.33	1.33	1.33
D	1.00	1.00	1.00
D-	0.67	0.67	0.67
F	0.00	0.00	0.00

*IB Standard Level at +0.25.

**IB Higher Level and AP courses are weighted at +0.5.

Only classes taken at RIS are included in a student's GPA. With some exceptions, such as Band and Choir, courses repeated at RIS do not receive credit or calculate into a student's GPA. Electives are most commonly earned from courses completed in excess of subject requirements. Summer School courses taken by rising grade 9 students are offered as Pass/Fail.



RESULTS, CLASS OF 2025

- 54%** of students earned a Bilingual Diploma
- 45** – Highest Diploma points awarded to an RIS student
- 5.40** Average grade per subject from students passing Diploma
- 34** RIS Diploma Score Average (worldwide Diploma Score Average 30)

	2025	2024	2023	2022	2021
Total # of IB candidates registered	38	42	23	19	26
IB Diploma pass rate	97%	95%	85%	95%	96%
Average Total Points	34	32	35	38	37

2025 RIS AP STATISTICS

- 119** Total # of students taking AP exams (10–12th graders)
- 264** Total # of AP exams taken
- 105** Total # of exams with 3 or above
- 85** Total # of exams administered to 82 members of the Class of 2026

SAT[®] RESULTS, CLASS OF 2026

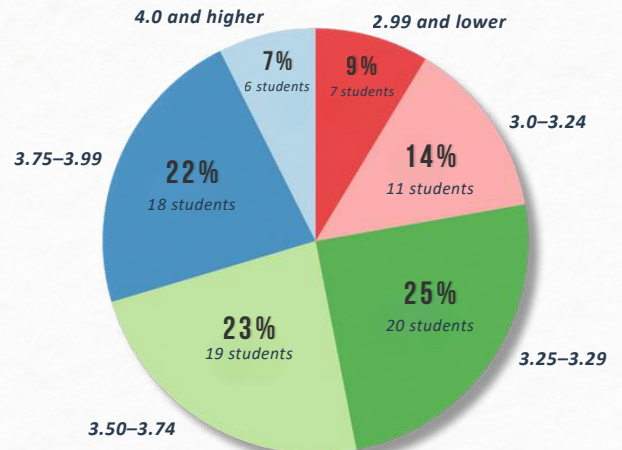
- 569** EBRW
- 646** Math
- 1215** Mean Total Score

93%
of the Class of 2026 took at least one SAT exam as of August 2025



CLASS OF 2026 GRADE DISTRIBUTION

Cumulative Weighted GPA (six semesters)



- Students from the Class of 2026 took an average of 7 IB or AP courses between grades 9 to 12 (excluding full IBDP students.)
- 2 new students joined the Class of 2026 at the beginning of the 2025-2026 school year and are not included in the above calculations.

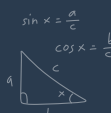
ENGLISH

AP Language and Composition
 AP Literature and Composition*
 Creative Writing
 ELD English 9, 10
 English 9, 10
 English Language and Research
 Film Studies*
 IB English A: Lang/Lit SL/HL
 IB English A: Literature SL/HL
 IB English B HL
 IB Literature and Performance SL



MATHEMATICS

Accelerated Math 9,10
 AP Calculus AB, BC
 AP Statistics
 Data Science
 Financial Math
 IB Math Analysis & Approaches SL/HL
 IB Math Application & Interpretation SL/HL
 Math 9,10
 Paced Math 9,10
 Precalculus
 Statistics



PHYSICAL EDUCATION

Fitness for Life
 Multi-Sports
 PE Blue
 PE Red
 Recreational Games
 Racket Games
 Strength Training
 Yoga



LEARNING SUPPORT

Modified English 9*, 10*
 Modified English Language and Research
 Modified Forensic Science*
 Modified Intro to Chemistry and Physics*
 Modified Math 9*, 10*, 11
 Modified World History & Geography 1*, 2*
 Study Skills 9–12
 Literacy Skills

SOCIAL SCIENCES

AP Human Geography
 AP Macroeconomics
 AP Microeconomics
 AP Psychology
 AP World History
 Business Studies
 Economics
 IB Business Management SL/HL
 IB Economics SL/HL
 IB Global Politics SL/HL*
 IB History SL/HL
 IB Psychology SL/HL
 Positive Psychology
 Psychology
 World History and Geography 1, 2



TECHNOLOGY

AP Computer Science Principles
 AP Computer Science Advanced
 Computer Science Discoveries
 Design Technology*
 IB Computer Science SL/HL*
 Introduction to Computer Programming
 Introduction to Robotics*



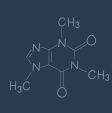
RELIGION & VALUES

Ethics
 Peace Studies
 Philosophy of Responsibility/-Dip,
 Religion 9-12
 World Religions
 Values Enrichment



SCIENCE

Anatomy and Physiology
 AP Biology
 AP Chemistry
 AP Physics 1
 AP Physics 2
 Biology
 Chemistry
 Environmental Science S1/S2
 Forensic Science
 IB Biology SL/HL
 IB Chemistry SL/HL
 IB Environmental Systems & Societies* SL/HL
 IB Physics SL/HL
 Introduction to Chemistry & Physics
 Physics



MODERN LANGUAGES

JAPANESE

AP Japanese Language and Culture*
 IB Japanese Ab Initio
 IB Japanese B SL/HL
 Japanese I, II, III*, IV



MANDARIN

AP Chinese Language and Culture
 IB Mandarin Ab Initio SL
 IB Mandarin B SL/HL
 Mandarin I, II, III, IV, V



SPANISH

AP Spanish Language and Culture
 IB Spanish Ab Initio SL
 IB Spanish B SL/HL
 Spanish I, II, III, IV



THAI

IB Thai A: Lang and Lit SL/HL
 Thai Native 9 -12
 Thai Literacy 9-12
 Thai Language & Society*
 Thai Language & Wisdom
 Thai Research & Service



VISUAL ARTS

3D Studio Art
 Art
 Art Foundations
 Ceramics
 Drawing
 Fabric Art
 Graphic Design
 IB Visual Arts SL/HL
 Independent Art
 Painting
 Photography



PERFORMING ARTS

Advanced Drama
 Drama
 Khon*
 IB Theater Arts SL/HL
 Thai Classical Dance
 Thai Music 1, 2*
 Theatre Technology



MUSIC

Advanced Concert Band
 Beginning Band
 Beginner Guitar
 Concert Band
 Honors Choir (Vivace)
 HS Chorus
 HS Choir
 Jazz Band
 Popular Piano
 Symphonic Ensemble



ADDITIONAL COURSES

ELD Language Acquisition 9, 10
 ELD Academic Support 9, 10
 ELD World History and Geography 2*
 Culinary Arts - Eastern Cuisine
 Culinary Arts - Western Cuisine
 Health and Wellness 9, 10
 IB Theory of Knowledge Y1, Y2
 IB Core Y1, Y2
 Intro to Music Theory and Composition
 Public Speaking/Speech & Debate
 Thai Cuisine
 A Yearbook

* Class not offered during the 2025–2026 school year.

Additional courses may appear on a student transcript listed as 'online.' Online courses are taken asynchronously via approved and accredited providers.

UNIVERSITY APPLICATION POLICIES

- RIS supports up to **15 university applications worldwide** and counsels its students to use this allowance deliberately and wisely.
- All letters of recommendation are confidential.



Disclosure of Disciplinary Records:

RIS will report any information that a college/university requests about a student's discipline records. RIS will report honestly about any out-of-school suspensions and/or expulsions.

 **Australia**

Australian National University
Deakin University
Macquarie University
Monash University
Murdoch University
University of Adelaide
University of Melbourne
University of New South Wales
University of Queensland
University of Sydney

 **Belgium**

Ghent University

 **Canada**

British Columbia Institute of Technology
Capilano University
Dalhousie University
King's University College - Western University
McGill University
McMaster University
Queen's University
Simon Fraser University
Toronto Metropolitan University
Trent University
University of British Columbia
University of British Columbia – Okanagan
University of Calgary
University of Guelph
University of New Brunswick
University of Ottawa
University of Toronto
University of Waterloo
University of Windsor
Vancouver Island University
Western University
Wilfrid Laurier University
York University

 **China**

Beihang University
Beijing Foreign Studies University
Beijing University of Posts and Telecommunications
Donghua University
Harbin Institute of Technology
Nanjing University of Finance & Economics
Nottingham University In Ningbo
Shenzhen University
Xi'an Jiaotong University

 **Czech Republic**

Charles University In Prague

 **France**

EDHEC Business School
NEOMA Business School

 **Germany**

Constructor University
Universitätsmedizin Neumarkt A.M.
University of Europe For Applied Sciences

 **Hong Kong**

Hong Kong Baptist University
Hong Kong Polytechnic University
Hong Kong University of Science and Technology
University of Hong Kong

 **Hungary**

Budapest Business School
Budapest Metropolitan University of Applied Sciences
Budapest University of Technology and Economics
Corvinus University of Budapest
Eötvös Loránd University

 **Ireland**

University College Cork

 **Italy**

Humanitas University
University of Milan

 **Japan**

Hosei University
Nagoya University
Nagoya University of Commerce and Business
Sophia University
Tokyo Institute of Technology
Waseda University

 **Netherlands**

Eindhoven University of Technology
Leiden University
Maastricht University
University of Amsterdam
University of Groningen
Utrecht University

 **Singapore**

Nanyang Technological University
National University of Singapore

 **South Korea**

Hanyang University
Korea University
Yonsei University

 **Taiwan**

Tamkang University

 **Thailand**

Assumption University of Thailand
Bangkok University
Carnegie Mellon - CMKL Thailand
Chiang Mai University
Chulabhorn International College of Medicine
Chulabhorn Royal Academy
Chulalongkorn University
Kasetsart University
Khon Kaen University
King Mongkut's Institute of Technology Ladkrabang
Mahidol University
Prince of Songkla University
Rangsit University
Silpakorn University
Srinakharinwirot University
Thammasat University

 **United Kingdom**

Bristol, University of The West of England
Cardiff University
City, University of London
Durham University
Hult International Business School
Imperial College London
Keele University
King's College London, University of London
Kingston University
Lancaster University
London School of Economics and Political Science
Loughborough University
Manchester Metropolitan University
Middlesex University
Newcastle University
Queen Mary University of London
Regent's University London
Royal Holloway, University of London
Royal Veterinary College, University of London
UCL (University College London)

 **United Kingdom**

(continued)

University of Bath
University of Birmingham
University of Brighton
University of Bristol
University of Dundee
University of Edinburgh
University of Essex
University of Exeter
University of Glasgow
University of Huddersfield
University of Kent
University of Leeds
University of Leicester
University of Lincoln
University of Liverpool
University of Manchester
University of Nottingham
University of Plymouth
University of Reading
University of Sheffield
University of Southampton
University of Strathclyde
University of Surrey
University of Sussex
University of the Arts London
University of Warwick
University of Westminster, London
University of York

 **United States**

American University
Arizona State University
Auburn University
Babson College
Baylor University
Beloit College
Bentley University
Binghamton University
Boston College
Boston University
Bowling Green State University
Brown University
Bryn Mawr College
California College of the Arts
California Institute of Technology
California State University-Long Beach
Carnegie Mellon University
Centre College
Clark University
Columbia University
Dartmouth College
DePauw University
Drew University
Drexel University
Embry-Riddle Aeronautical University-Prescott
Emory University
Florida Institute of Technology
George Washington University
Hofstra University
Illinois Institute of Technology
Indiana University-Bloomington
Ithaca College
Kansas State University
Kenyon College
Lawrence Technological University
Louisiana State University
Loyola Marymount University
Loyola University New Orleans
Maryland Institute College of Art
Massachusetts College of Art and Design
Miami University-Oxford
Michigan State University
Middle Tennessee State University
Minnesota State University-Mankato
Montgomery College
New York University
North Central College
Northeastern University

 **United States**

(continued)

Northwestern University
Ohio State University
Otis College of Art and Design
Pennsylvania State University
Pepperdine University
Pratt Institute
Purdue University
Rochester Institute of Technology
Rutgers University
Saint Louis University
San Diego State University
Santa Clara University
School of the Art Institute of Chicago
Seattle University
Southern Oregon University
Stanford University
Stony Brook University
SUNY College At Geneseo
Syracuse University
Texas A & M University – College Station
The New School
Trinity University
Tufts University
Tulane University of Louisiana
University of California-Berkeley
University of California-Davis
University of California-Irvine
University of California-Los Angeles
University of California-Merced
University of California-Riverside
University of California-San Diego
University of California-Santa Barbara
University of California-Santa Cruz
University of Colorado Boulder
University of Florida
University of Hartford
University of Hawaii At Manoa
University of Illinois Chicago
University of Illinois Urbana-Champaign
University of Iowa
University of Maryland-College Park
University of Massachusetts-Boston
University of Massachusetts-Amherst
University of Michigan-Ann Arbor
University of Michigan-Dearborn
University of Michigan-Flint
University of Minnesota
University of Minnesota-Twin Cities
University of Missouri-Columbia
University of Nevada-Las Vegas
University of North Dakota
University of Oregon
University of Pennsylvania
University of Pittsburgh
University of Puerto Rico-Mayaguez
University of Puerto Rico-Rio Piedras
University of Richmond
University of Rochester
University of San Francisco
University of Southern California
University of Southern Florida
University of Southern Mississippi
University of Texas at Austin
University of Texas, Austin
University of The Pacific
University of Virginia
University of Washington-Seattle
University of Wisconsin-Madison
Virginia Polytechnic Institute and State University
Wabash College
Washington University in St Louis
Western Michigan University
Worcester Polytechnic Institute
Yale University

Bolded universities indicate matriculation